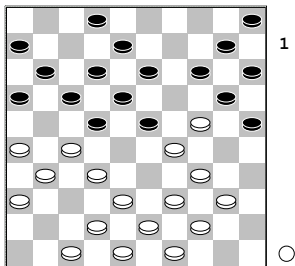


351
 □ Ludwig, W.
 ■ Provoost, B.
 GEL-beker DUO-Beusi20-06-2008

1.33-29 17-22 2.39-33
 11-17 3.44-39 6-11
 4.50-44 1-6 5.31-27
 22x31 6.37x26 19-23
 7.35-30 20-25 8.30-24
 14-20 9.33-28 9-14
 10.28x19 14x23 11.41-37
 3-9 12.46-41 9-14
 13.36-31 17-22 14.41-36
 4-9 15.32-27 11-17
 16.37-32 7-11 17.40-35
 14-19 18.45-40 19x30
 19.35x24 9-14



20.47-41 de combinatie
 hekstelling - Roozenburg
 blijkt best speelbaar, maar
 dan wel anders:

[>20.40-35 14-19
 21.35-30 2-7 22.42-37
 10-14 23.48-42 5-10
 24.47-41 23-28 25.32x23
 19x28 26.38-32 28-33
 27.29x38 20x40 28.44x35
 25x34 29.39x30
 (-0.03;-0.83/10)]
 20...14-19 21.40-35 19x30
 22.35x24 23-28 23.32x23
 22-28 24.23x32 13-19
 25.24x22 17x46 26.34-30
 25x23 27.38-32 46x28
 28.27-21 16x27 29.31x33
 10-14 30.42-38 14-19
 31.38-32 5-10 32.36-31
 10-14 33.31-27 20-24
 34.44-40 11-17 35.43-38
 6-11
 0-2 (1.21/1.10)
 352

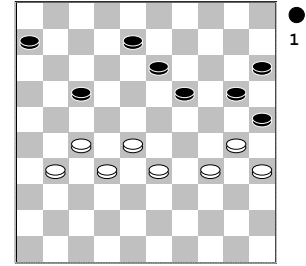
□ Voogd, de, D.
 ■ Wassink, G.
 GEL-beker DUO-Beusi20-06-2008

1.32-28 17-22 2.28x17
 11x22 3.37-32 6-11
 4.41-37 12-17 5.46-41
 7-12 6.34-29 2-7
 7.40-34 19-23 8.35-30
 20-25 9.45-40 14-19
 10.40-35 10-14 11.44-40
 14-20 12.50-45 9-14

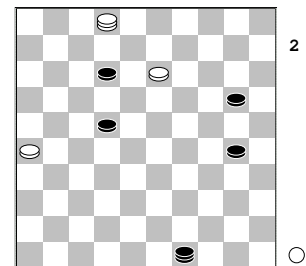
13.32-28 23x32 14.37x28
 4-9 15.31-26 1-6
 16.28-23 19x28 17.29-24
 20x29 18.34x32 25x34
 19.39x30 22-27 20.32x21
 16x27 21.30-25 14-19
 22.35-30 5-10 23.40-34
 10-14 24.45-40 19-23
 25.40-35 17-21 26.26x17
 11x22 27.33-29 6-11
 28.41-37 13-19 29.29-24
 8-13 30.34-29 23x34
 31.30x39 19x30 32.25x34
 14-19 33.39-33 9-14
 34.43-39 18-23 35.35-30
 12-18 36.49-44 7-12
 37.33-29 11-17 38.30-25
 14-20 39.25x14 19x10
 40.29-24 10-14 41.34-30
 14-19 42.37-32 3-9
 43.32x21 17x26 44.36-31
 26x37 45.42x31 12-17
 46.48-42 17-21 47.42-37
 9-14 48.30-25 19x30
 49.25x34 21-27 50.31-26
 23-28 51.38-32 27x38
 52.26-21
 1-1 (1.31/1.29)
 353

□ Hoekman, N.
 ■ Derkx, B.
 GEL-beker DUO-Beusi20-06-2008

1.31-27 17-21 2.37-31
 21-26 3.32-28 26x37
 4.41x32 11-17 5.46-41
 17-21 6.41-37 21-26
 7.37-31 26x37 8.32x41
 6-11 9.38-32 19-23
 10.28x19 14x23 11.35-30
 20-25 12.33-29 10-14
 13.40-35 5-10 14.41-37
 12-17 15.39-33 17-21
 16.44-39 23-28 17.32x12
 21x41 18.36-31 7x18
 19.47x36 14-20 20.43-38
 13-19 21.50-44 11-17
 22.33-28 8-13 23.39-33
 10-14 24.38-32 3-8
 25.42-37 8-12 26.44-40
 17-21 27.49-43 2-8
 28.43-38 20-24 29.29x20
 15x24 30.28-22 18x27
 31.31x22 21-26 32.33-28
 4-10 33.37-31 26x37
 34.32x41 12-17 35.22x11
 16x7 36.41-37 7-12
 37.36-31 13-18 38.38-32
 24-29 39.34x23 18x29
 40.40-34 29x40 41.45x34
 9-13 42.48-43 10-15
 43.43-39 14-20 44.39-33
 12-17 45.31-27 1-6
 46.37-31
 13-18



[>46...6-11 47.31-26
 11-16 48.27-22 19-24
 49.30x19 13x24 50.22x11
 16x7 51.35-30 24x35
 52.28-22 20-24 53.22-18
 25-30 54.34x25 35-40
 55.26-21 7-11 56.25-20
 40-44 57.20x29
 (-0.73;-0.09/12)]
 47.31-26 8-12 48.27-21
 6-11 49.21-16 20-24
 50.16x7 12x1 51.32-27
 1-7 52.27-22 18x27
 53.28-23 19x39 54.30x19
 39x30 55.35x24 27-32
 56.19-13 32-38 57.13-8
 38-43 58.8-2 7-12
 59.24-19 43-49 60.2-16
 17-22 61.16-2 25-30
 62.19-13 15-20



Grappig (op de avond dat
 Turkije in de kwartfinale van
 het EK voetbal Kroatie
 verschalkt) is dat 2-11
 verhinderd is door de Coup
 Turk 49-21! 63.2-16 20-25
 64.16-2 22-27 65.2-11
 49-35 66.11-50
 1-1 (1.57/1.59)
 354

□ Messemaker, B.
 ■ Fennema, F.
 GEL-beker DUO-Beusi20-06-2008

1.32-28 16-21 2.31-26
 11-16 3.37-32 7-11
 4.42-37 1-7 5.36-31
 18-22 6.41-36 13-18
 7.46-41 9-13 8.48-42
 21-27 9.32x21 16x27
 10.37-32 11-16 11.32x21
 16x27 12.34-29 19-23
 13.28x19 14x34 14.40x29

20-25 15.45-40 10-14
16.40-34 5-10 17.41-37
3-9 18.44-40 14-19
19.47-41 10-14 20.29-24
19x30 21.35x24 6-11
22.50-44 14-19 23.34-29
19x30 24.29-23 18x29
25.33x35 13-18 26.37-32
8-13 27.32x21 22-27
28.31x22 18x16 29.36-31
2-8 30.41-36 12-18
31.38-32 8-12 32.40-34
13-19 33.42-38 9-13
34.39-33 18-22 35.31-27
22x31 36.36x27 4-9
37.32-28 12-18 38.44-40
18-23 39.38-32 9-14
40.35-30 14-20 41.40-35
13-18 42.43-38 7-12
43.33-29 20-24 44.29x20
25x14
 [>44...15x24 45.38-33
 16-21 46.27x7 12x1
 47.34-29 23x34 48.30x39
 18-23 49.39-34 1-7
 50.34-29 23x34 51.32-27
 25-30 52.27-21 7-12
 53.49-43 19-23 54.28x19
 24x13 55.35x24 34-40
 56.24-20 40-44
 (0.13;1.47/13)]
45.38-33 14-20
 [>45...16-21 46.27x7
 12x1 47.30-25 18-22
 48.35-30 1-7 49.49-44
 15-20 50.34-29 23x34
 51.30x39 (1.34;2.44/12)
]
46.30-25 20-24 47.34-30
 en zwart gaat door zijn vlag.
 In de diagramstand verliest
 15-20 positioneel kansloos.
 Het tijdelijke offer 16-21
 biedt echter nog
 remisekansen, door daarna op
 het goede moment met 23-29 te
 komen. Daarom had wit op de
 zet ervoor beter 49-43!
 kunnen doen.
 [>47.49-43 15-20
 (47...16-21 48.27x7 12x1
 49.25-20) 48.25x14 19x10
 49.28x30 17-22 50.30-24
 22x31 51.26x37 16-21
 52.24-20 12-17 53.34-29
 17-22 (2.53;0.22/12)]
2-0 (1.28/1.30)